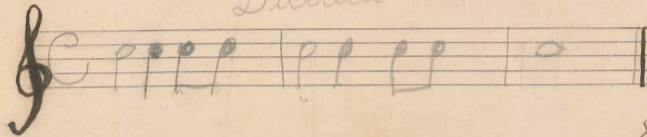


Handwritten musical notation on a five-line staff. It features a treble clef, a key signature of two flats (B-flat and E-flat), and a 4/4 time signature. The notation includes several chords and melodic lines. A large, faint oval is drawn around a section of the music in the middle of the staff.

Handwritten musical notation on a five-line staff, continuing from the previous section. It features a treble clef, a key signature of two flats, and a 4/4 time signature. The notation includes several chords and melodic lines.

3

Dictado ritmo da 1^a serie de teoria e solfejo



Eulina Uzel de Mello
Mottos